



# THE HAZEL

---

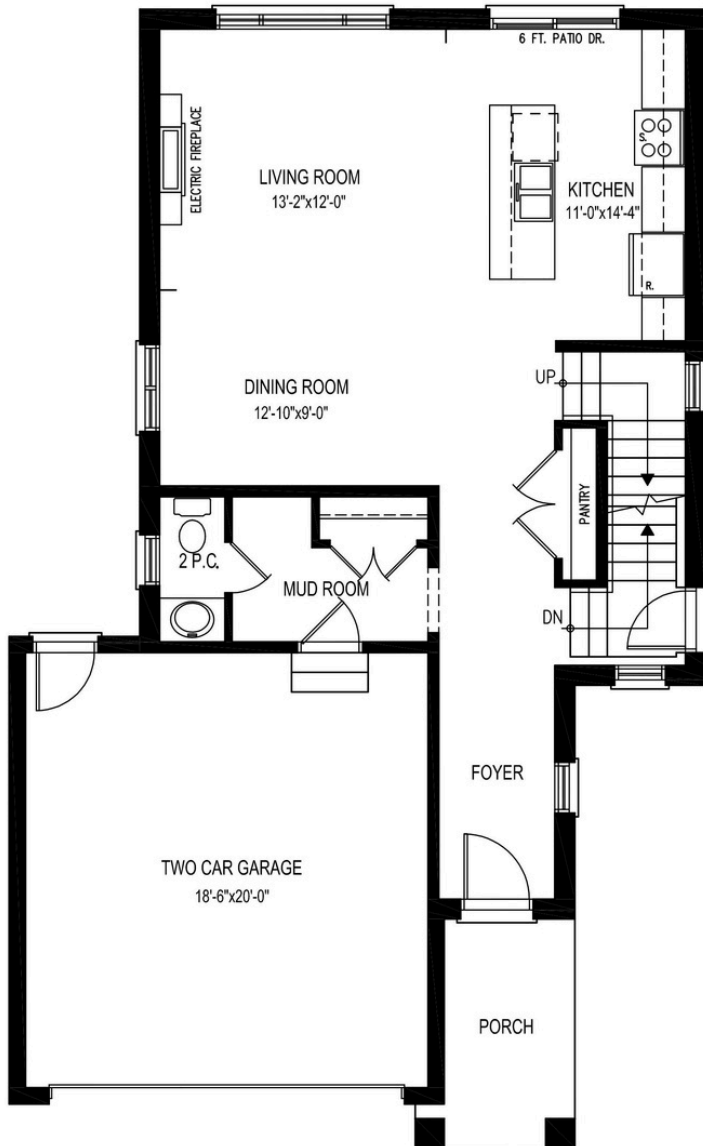
1986 sq ft

4 Bedrooms | 2.5 Bathrooms | 2 Car Garage

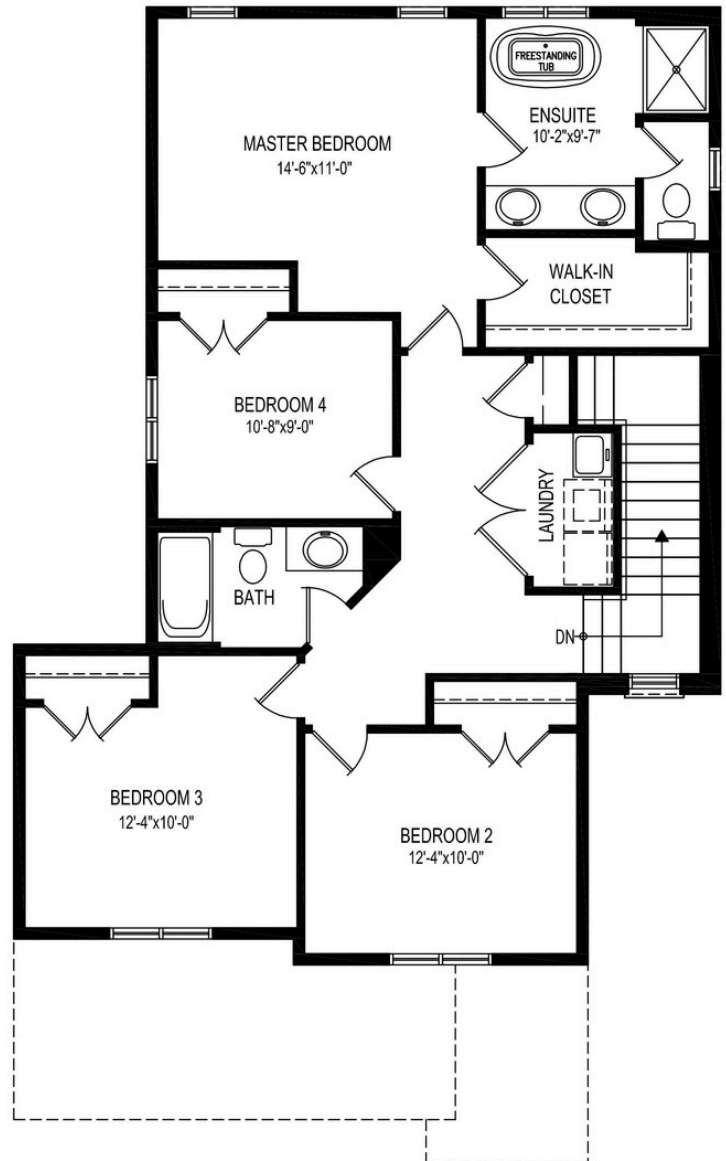
BIRCHWOOD  
— HOMES —

# The Hazel

4  | 2.5  | 2  | 1986 sq ft



MAIN FLOOR PLAN - 861 SQ.FT.



SECOND FLOOR PLAN - 1125 SQ.FT.